

CANADIAN  
MALARTIC  
PARTNERSHIP

DISCOVER OUR OPERATIONS  
IN THE HEART OF THE URBAN  
ENVIRONMENT OF MALARTIC



## CANADIAN MALARTIC PARTNERSHIP

The Canadian Malartic Partnership (Partnership) is owned equally by Yamana Gold Inc. and Agnico Eagle Mines Limited. It manages and operates Canadian Malartic Mine, Canada's largest open-pit gold mine located in the Town of Malartic, in the heart of the Abitibi Gold Belt.

The Partnership has started construction of the Odyssey Mine, which is located approximately 3 km east of the entrance to the Town of Malartic. The mine will develop the continuity of the deposit in the Canadian Malartic and Barnat pits through four main mineralized zones at depth. It will become one of Canada's largest underground gold mines.

Canadian Malartic Mine will continue to operate until 2029 by mining the Barnat pit. The Odyssey Mine's life is expected to last until 2039.

## STEPS THAT DEFINE OUR ACTIONS

We are committed to enforcing three operating steps that structure the on-site work performed daily by each and every employee at our sites.



1| Is it **safe** for employees?



2| Does it respect **the environment and the community**?



3| Once the first two steps have been confirmed operations may **proceed**.



## AT GLANCE



### More than 2,100 full-time employees on the site

- ▶ More than 800 employees
- ▶ Nearly 1 300 contractor employees



### Continuous operations

- ▶ 24 hours a day, 7 days a week
- ▶ A fleet of nearly 100 pieces of mobile equipment



### Production

- ▶ 568,634 ounces of gold produced in 2020
- ▶ Average daily plant production capacity: 57,000 t/d



### Estimated number of employees, including contractor employees

- ▶ Until 2028, for the construction period and first production phase: 500 to 1,000
- ▶ At peak operations by 2029-2030: 1,500



### Mining Method and Depth

- ▶ By a ramp and shaft
- ▶ Estimated ramp and shaft depth: 1,800 m



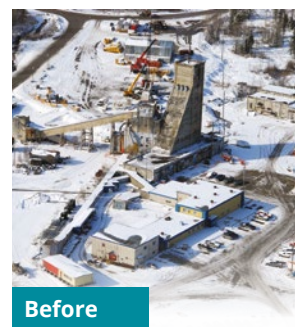
### Production and Synergy

- ▶ Estimated production, at peak operations: 19,000 t/d of ore + 5,000 t/d of waste rock
- ▶ Estimated grade: 2.75 g/t gold
- ▶ Use of CMM's ore-processing plant will be adapted

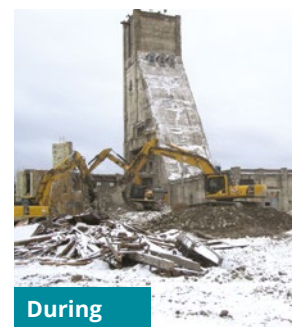
## RESTORING THE EAST MALARTIC ORPHAN SITE

The Partnership implements thickened tailings management in order to limit the project's footprint, minimize water use, optimize risk management, and improve our environmental performance. It's an innovative approach to restoring an orphan site that once was the responsibility of the Government of Quebec.

The East Malartic mine, one of three large gold mines that have marked Malartic's history, was in operation from 1936 to 1983. The plant built on the site subsequently processed ore from other mines until 2002. Under an agreement signed in 2009 with the Government of Quebec, we committed to assuming one-half of the financial obligations for the site's restoration and to use some of the tailings to gradually cover the site.



Before



During



After one of the initial restoration stages



Site in summer 2016



Site in summer 2020

# MINING COMPLEXES

## CANADIAN MALARTIC MINE

- A. Crushing zone
- B. Ore stockpiling zone
- C. Ore processing plant
- D. Tailings pond
- E. Administrative building and garage
- F. Pits
- G. Surface waste rock pile

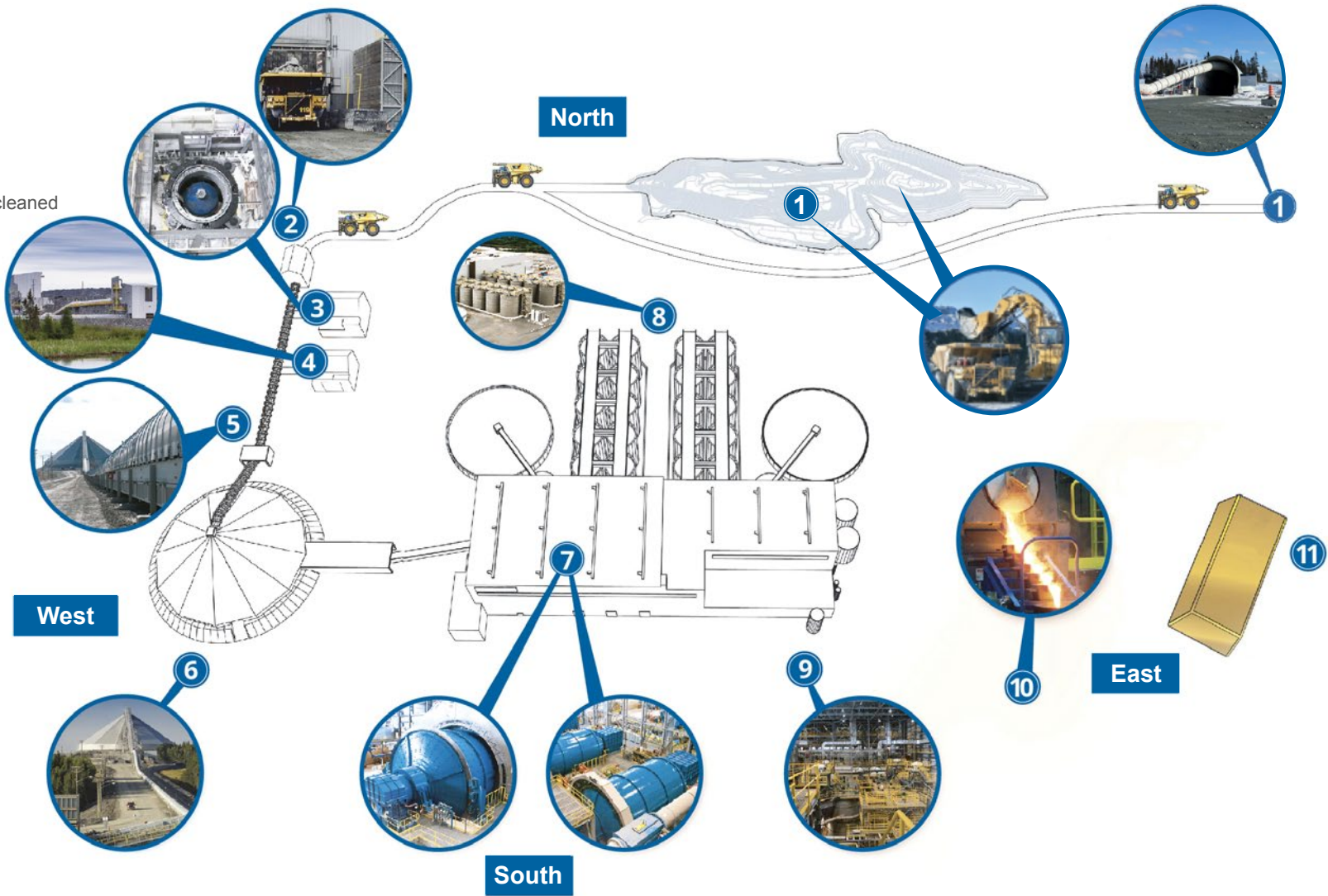
## ODYSSEY MINE

- A. Service ramp portal
- B. Paste backfill plant
- C. Administrative buildings and main drier
- D. Headframe
- E. Winch building
- F. Waste-rock and ore silos
- G. Mechanical maintenance workshop



# ORE PROCESSING

- 1 Ore extraction from Canadian Malartic and Barnat pits as well as the Odyssey mine
- 2 Primary ore crushing
- 3 Secondary ore crushing
- 4 Auxiliary dumping site used to feed the conveyor
- 5 Ore taken by conveyor to the stockpiling zone
- 6 Ore storage
- 7 Ore grinding
- 8 Leaching process
- 9 Gold extraction process
- 10 Gold pour
- 11 Gold bar extracted from mould and cleaned

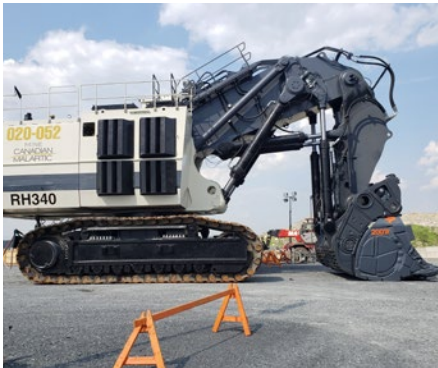


# CANADIAN MALARTIC MINE THE LARGEST MOBILE EQUIPMENT IN ABITIBI-TÉMISCAMINGUE



## Production truck

- ▶ 218-tonne capacity.
- ▶ Each tire has a height of 3.56 meters, or 2 people measuring 6 feet each.
- ▶ Five-inch rubber lining added to dump bodies to reduce noise.



## Electric shovel

- ▶ Fully electric.
- ▶ The bucket (shovel) has a 60-tonne capacity. That's equivalent to the weight of 40 compact cars.
- ▶ Powered by a 7,200-volt cable and weighs 540 tonnes.



## Pit Viper blasthole drill rig

- ▶ Used on flat terrain.
- ▶ Our drills are equipped with rubber skirting and water tanks to limit the spread of dust during drilling.

## Water trucks

- ▶ Spray roads to reduce dust.
- ▶ The capacity of these trucks ranges from 18,000 to 20,000 gallons of water, or the equivalent of two 20-foot-diameter swimming pools.



## Hitachi shovel

- ▶ Equipped with two motors equivalent to 19 compact cars.
- ▶ The bucket (shovel) can hold a 65-tonne load.
- ▶ Equipped with a remote control system.
- ▶ Noise-reducing louvers added to the radiator.



# CANADIAN MALARTIC

PARTNERSHIP



[canadianmalartic.com](http://canadianmalartic.com)



## Information

819 757-2225, extension 3425

[relationscommunautaires@canadianmalartic.com](mailto:relationscommunautaires@canadianmalartic.com)

